



BMV Veterinary Systems

PRODUCT CATALOG



www.bmv-vet.com

BMV
TECHNOLOGY

Ruminant & Farm Equipment

In Touch with **Veterinary**

S6



PT50C Vet



BMV
TECHNOLOGY

bmv-vet.com



Ruminant & Farm Equipment

Portable Veterinary Ultrasound

The innovative PT50 color Doppler ultrasound dedicated veterinary user interface offers quick and precise Animal Care imaging, diagnostics, storage and printing, thanks to its ease of use and full touch screen control.



PT50C Vet

Features

- ▶ Easy to clean
- ▶ Full touch screen(15")
- ▶ Dedicated simplified interface
- ▶ 3 probes ports
- ▶ Protection cover
- ▶ Various animal veterinary measurement packages
- ▶ Compact, height-adjustable trolley
- ▶ iBstation for convenient review and image processing

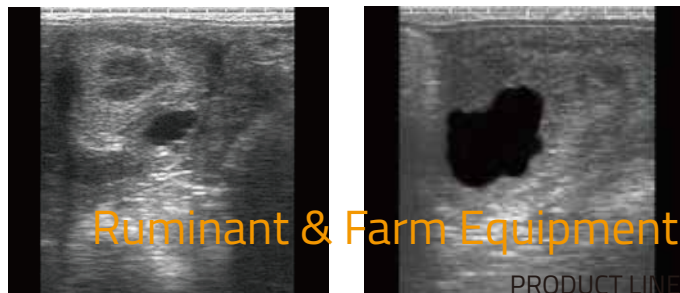


PT60 Vet

S6

Small size, great imaging

Weighing just 1.2kg, the BestScan® S6 is small in size, but big in functionality and features. The S6 was specifically engineered for all aspects of bovine and equine reproductive imaging, as well as for basic equine tendon imaging.



PRODUCT LINE

BestScan® S6 Touch

compact touch ultrasound system
for large animal scanning

Specifically engineered for all aspect of bovine and equine reproductive imaging, as well as for basic equine tendon imaging

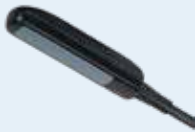
- ▶ Excellent image
- ▶ Multiple probes (lower TCO)
- ▶ Internal battery for 4.5+ hours continuous scan
- ▶ Rectal convex probe for a deeper and wider image
- ▶ Probe introducer ease shoulder and arm strain
- ▶ Left/Right hand operation
- ▶ Goggles (optional)



Support Probes



Bovine Scan Curve



Bovine Scan Linear



Equine Scan Linear



Ovine Scan Convex



Accurate



Easy



Fast

Applications



Bovine beef/dairy



Equine



Sheep - goats

BMV
TECHNOLOGY

bmv-vet.com

Ruminant & Farm Equipment

PRODUCT LINE

S10

Wireless Color Doppler Ultrasound System

- ▶ IP67 waterproof performance
- ▶ 4K resolution, and best-in-class processing
- ▶ Unmatched B&THI,M and colors Doppler (color Doppler,Power, PW mode) imaging
- ▶ Unbelievable experiences thanks to exceptional performance
- ▶ Modular, Maintenance-free, future-proof platform
- ▶ Power to go, 14 hours working time,wireless charging
- ▶ Broad-bandwidth phased/linear/curved/rectal array transducer (12 to 1 MHz operating frequency range)
- ▶ Special patented BMV's veterinary software
- ▶ Wide range of clinical applications such as: Cardiac, Abdominal, Rectal and more
- ▶ Can be used by vet cardiologists, general vet practitioners&professionals in a wide range of settings such as equine, bovine, small animal hospital;



S10 S9 Support probes:

- ▶2.0 to 5.0 MHz curved probe
- ▶6.5 MHz 60 mm linear rectal probe
- ▶3.5 MHz convex T probe for large field of view (pregnancy diagnosis in sows, sheep and goats)



BMV
TECHNOLOGY

bmv-vet.com



S9

Do More | Faster | Focused

S9 is specifically engineered for all aspects of bovine and equine reproductive imaging, as well as for basic equine tendon imaging.

- ▶ IP67 waterproof performance
- ▶ Intelligent HD imaging : 32 channels, 128 elements
- ▶ 12 hours continuous working time,video glasses up to 4 hours.
- ▶ Special patented BMV's veterinary software
- ▶ Fast connection and conversion:
- ▶ Supports(Android, IOS, Windows) tablet, mobile phone, laptop
- ▶ Tablets and TVs can be connected at the same time, connecting faster and more suitable for conversion
- ▶ Special patented BMV's veterinary software
- ▶ Plenty of accessories options: introducer stick, Binocular lenses, smart devices, backpack, belt, wrist straps, portable suitcase, mobile charger, wireless remote control, and air print etc



Ruminant & Farm Equipment

PRODUCT LINE

S6 Lite (L80)

Touch B/W Ultrasound System



- ▶ Net weight 1.2kg. Smart and light.
- ▶ High-capacity lithium Battery ,more than 6 hours work.
- ▶ Standard configuration 1 pc of sunshine cover, suitable for use in outdoor strong sunshine.
- ▶ Available for left/right hand alternative use, eliminating operate fatigue.
- ▶ Multiple use method: hand-held, chest hanging, back hanging , waist hanging, etc.
- ▶ Optional professional ultrasound goggle, convenient for outdoor use, meet different need.
- ▶ Sophisticated craft, splash-proof, dust-proof.



S8

Cattle Ultrasound System

S8 is a durable, lightweight, portable, convex probe cattle ultrasound. It is designed to be paired with the ReproArm for rapid pregnancy diagnosis and the alleviation of the shoulder and arm strain.

Hardware configuration:

- ▶ Enhanced processor+ 128 elements probe+32 channles
- ▶ Clear high-resolution image
- ▶ 8 hour lithium ion built-in battery
- ▶ Charge from 120/240 VAC or 12 DC (Car Charger)
- ▶ Battery indicator on display
- ▶ Remote controller&Strong LEMO type connector
- ▶ Works with sizes of IFR™ Probe Introducer



BMV
TECHNOLOGY

bmv-vet.com

S6

Touch B/W Ultrasound System



- ▶ Superior image quality
- ▶ Grid for estimation
- ▶ Waterproof designed difficult field condition on a daily basic
- ▶ 7" high resolution, antiglare touchscreen
- ▶ Curved Probe: See more, then do more, with curved probe, you get wide field of view and deeper penetration.
- ▶ Environmental rating: With IP67 protective case; IP67 (probe head), IP45 (main unit)
- ▶ Rotate Screen for left hand layout or right hand using
- ▶ Patent design: Rectal Linear Probe + Works with sizes of IFR™
- ▶ Probe Introducer;
- ▶ Hood sheath: Using hood sheath sunlight readable
- ▶ Storage and Export: Images saved up to 1000 frames, and export via USB/SD supported
- ▶ i-Scan™ ultrasound goggles(optional)
- ▶ IFR™ probe introducers(optional)
- ▶ Built-in 3.5+ hour battery
- ▶ S6 competes most closely with the popular DRAMINSKI iScan,ECM Imago

S5

Intelligent Palm Veterinary Ultrasound System



- ▶ Special design, Good image quality and stable connection: Connected with smartphone, tablet PC with connector type C USB)
- ▶ IPX7designed on animal condition environment, large screen scanning, replaceable cables, high cost effective
- ▶ Good image quality and stable connection:Connected with smartphone,tablet PC of you with connector type C USB)
- ▶ Professional measurement for bovine, equine, fully meeting the clinical needs for bovine, equine-pregnancy testing, fetal sex and age, disease detection, monitoring of follicles testing
- ▶ Unique marketing competence: Innovative design, with technology and fashion sense.

Support:

- ▶ 6.5 MHz 60 mm linear rectal probe (5.0 to 9.0 MHz)
- ▶ 3.5 MHz convex T probe for large field of view(pregnancy diagnosis in sows, sheep and goats)

Ruminant & Farm Equipment

PRODUCT LINE

S3

Wireless Veterinary Ultrasound

S3 with good price but stable quality. Its extremely lightness and finish allows for effective use, avoiding the risk of cables with pig, sheep, goats species.

- ▶ Designed for pregnancy diagnosis in sows, sheep and goats.
- ▶ Excellent image for reproduction scan
- ▶ Auto Backfat Measurement
- ▶ Maintenance-free probe
- ▶ Freeze button
- ▶ Splash-resistant probe
- ▶ Waterproof Tablet(optional)
- ▶ Charge anywhere, 220V, 12V, wireless charging
- ▶ Take by hand or by neckbelt



S4 Go together with S3 competes most closely with the popular Sonowin SmartScan ,Sono V6+ and Kaixin MSU1 Plus.

S4

Wireless Veterinary Ultrasound

- ▶ Designed for pregnancy diagnosis in sows, sheep and goats.
- ▶ Excellent image for reproduction scan
- ▶ Backfat Measure: auto identification, auto measurement, auto saving measurement results and manual adjustment as the compensation
- ▶ High-grade dust-proof waterproof design
- ▶ Comfortable grip design
- ▶ Concealed waterproof charging port
- ▶ Simple interface color touch screen



S1ai

Camera Guided AI Gun



S2

Wireless veterinary ultrasound system

- ▶ Mechanical probe, waterproof and dustproof design
- ▶ Comes with WiFi hotspot, software automatically recognizes the connection more stable connection
- ▶ Wireless charging module, charging faster, longer standby
- ▶ Light weight, only 0.4kg
- ▶ Direct connection to tablet or phone, high resolution, large storage
- ▶ Support for movie playback and video retention In dependent research and development of ultrasound dedicated platform
- ▶ Good price but stable quality



S1 (BF-8)

Smart back fat Tester System

Measuring animal backfat thickness Pulse ultrasound electronic ear reading function Intelligent analysis USB plug-in is charging Long battery life, Clear button functions Simple, convenient and efficient. Data is saved in real time and archived without worry Fast and accurate measurement , display data directly Bluetooth connection with tablet phone

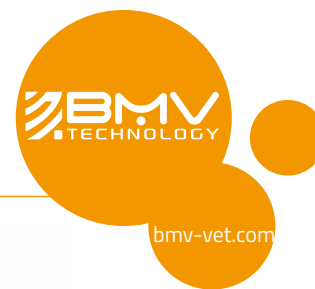


S1em

Estrous & Mastitis Detector

Ruminant & Farm Equipment

PRODUCT LINE



L6RL

Full Digital B/W Ultrasound System

- ▶ Light weight, only 0.6kg;
- ▶ 5.8 inch WVGA LCD and excellent imaging quality and ergonomic design;
- ▶ Versatile and easy use for all veterinary applications on bovine, equine, swine, etc;
- ▶ Li-ion battery with 3 operating hours;
- ▶ Images and videos export via USB 2.0 with 450 frame cine loop inside;
- ▶ Software & Report for reproductive system, and measurement for distance, area, circumference, volume, angel, heart rate, etc.



L70

for Animal Science, Backfat, Muscle Scoring

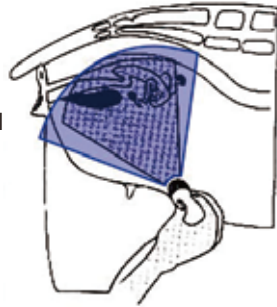
- ▶ Net weight: 600g
- ▶ 5.8 inch TFT LCD
- ▶ Easy - to - use GUI menu
- ▶ Low power consumption
- ▶ USB 2.0 For real - time picture uploading to PC
- ▶ Full digital beamforming technology
- ▶ Probe automatic identification
- ▶ Gama correction, Color encode, Image Smoothen



L6RC

Full Digital B/W Ultrasound System

- ▶ Superior Imaging Quality with 96 elements
- ▶ More Wider Scan Angle
- ▶ Longer Life-time
- ▶ No need to do oil-injecting all the time
- ▶ No possibility of the air-bubbles which affect image quality in Some Mechanical Probes
- ▶ More comfortable for animals without motor-motion



M30

Full Digital B/W Ultrasound System



M50

Full Digital B/W Ultrasound System

- ▶ 5.8" WVGA LCD monitor, wide viewing angle
- ▶ Resolution: 640*380
- ▶ Imaging Modes: B, B+B, B+M,
- ▶ Gray scale levels: 256
- ▶ 2.5MHz, 3.5MHz, 5.0MHz,Adjustable (3 point each probe)
- ▶ General B mode: distance, circumference, area, volume, EF rate, heart rate, Time
- ▶ Scanning depth: ≥ 200 mm, multi - steps



S1sa

Sperm quality analyzer



Ruminant & Farm Equipment

PRODUCT LINE

Wechat



Download and intall APP



Cooperative Partners



Academic and Clinical Research



China Agricultural University



South China Agricultural University

BMV Technology Co., Ltd

Office Add: Flat A, 5/F., Unionway Commercial Centre, 283 Queen's Road Central, Hong Kong

Factory Add: BMV of Yinjin Building, Baoan Centre District, Shenzhen 518010, China

Tel: +86 (0755) 85275443 Fax: +86 (0755) 26564580

Contact: Mr. David Luo, CEO

Email: sales@bmv.cc Mobile/WhatsApp: +8613500002887

Website: www.bmv.cc or www.bmv-vet.com